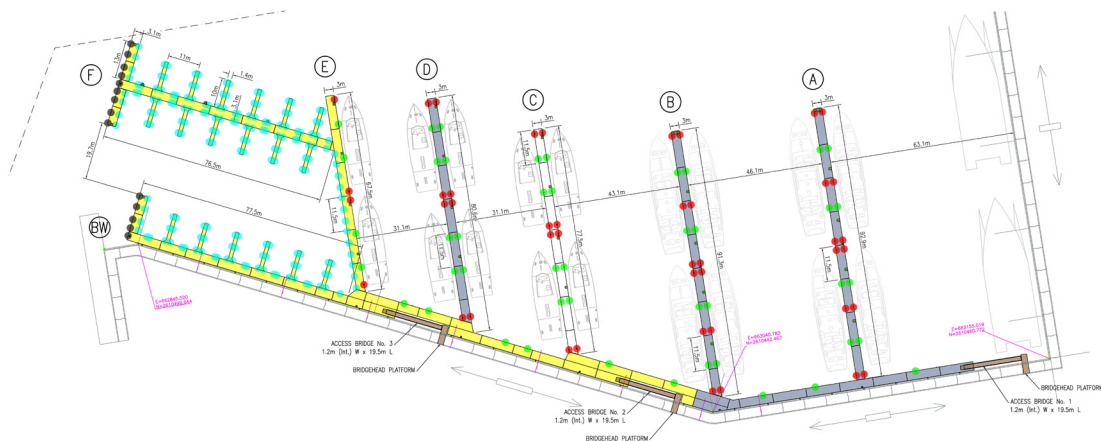


BERTHING FACILITY FOR COAST GUARD PATROL BOATS

SULTANATE OF OMAN

A new berthing facility for the Royal Oman Police Coast Guard by Walcon Marine is now operational.

The pontoons form part of a major new Coast Guard Harbour in the town of Sidab, a short distance to the east of Muscat on the Gulf of Oman. The facility is made up of 315 metres of walkways running along a section of the harbour's inner wall with five piers coming off them ranging in length from 68 to 93 metres.



The piers are primarily for alongside docking by the Police Coast Guard's fleet of Rodman and Ares fast patrol boats. These are between 26 and 35 metres in length and the layout delivers space for 19 in total. Additionally, at the western end 19 finger pontoons each 10 metres in length are available for use by smaller Interceptor craft and RIBs.

To cater for these high usage vessels, Walcon specified its heavy-duty structural steel Jumbo pontoons.

For this project they are three metres wide, have 750mm of freeboard plus a central service duct, and a high live load of 3kN per m². They have been finished with a special paint system for maximum protection and durability.

Other features include mooring bollards up to 15 tonnes load, emergency ladders and emergency cabinets. To cope with the less-than-gentle dockings anticipated, D fenders have been fitted in certain locations while, for the larger vessels,



pneumatic fenders each one metre in length and 500mm in diameter, have been attached. The entire facility is positioned behind a new, 370-metre rock breakwater.

The Coast Guard division of the Royal Oman Police is responsible for the safety and security of Oman's territorial waters and undertakes anti-piracy and anti-smuggling operations as well as search and rescue duties. Walcon worked with main contractor Carillion Alawi LLC to realise this high specification project.

Pictured below is the first of the 14 new ARES 85 Hercules Patrol Interceptor Vessels (PIV), delivered to the Coast Guard in November 2019, that will be based in Sidab. The 26-metre vessels are designed by the UK's BMT Group and built in Turkey.



Founded in 1963, Walcon Marine is the market leader in the design, construction and installation of marinas, yacht harbours and berthing facilities around the world. As probably the longest established and most experienced company in its field, Walcon Marine is a global organisation with manufacturing facilities in the UK, Australia and Dubai. Its pontoons are now installed in over 30 different countries on five continents, and recent projects include the marina built at Portland on the south coast for England for the 2012 Olympics.

www.walconmarine.com Tel. +44 (0) 1489 579977 Email: sales@walconmarine.com

Due to our policy of continuous product development we reserve the right to change specifications without prior notice.