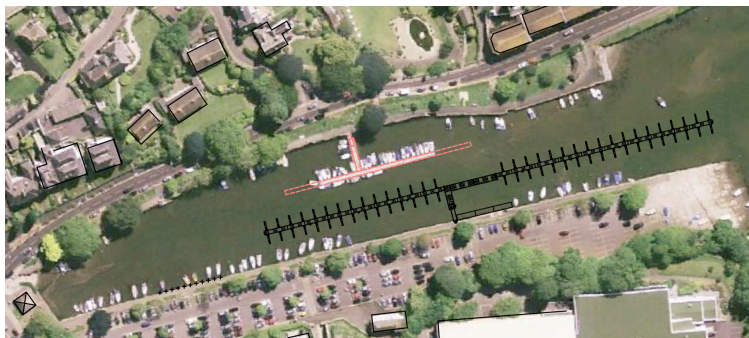


## NEW FACILITY AT KINGSBRIDGE

### MORE VISITORS TO SPUR ECONOMIC ACTIVITY

Easter 2014 saw the opening of a new berthing facility at Kingsbridge, on the south coast of Devon. Designed and built by Walcon Marine, the linear installation provides berths for 132 boats of up to 5.5 metres plus visitor and ferry facilities.

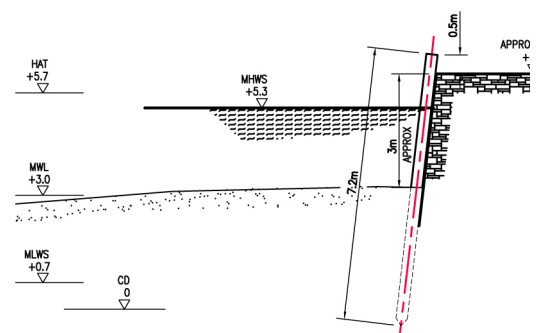
The £300,000 mooring scheme followed an extensive public consultation process and has been welcomed by local residents, who expect it to provide a noticeable boost to the local economy.



The plan to the left shows the proposed new pontoon outlined in black alongside the previous installation - outlined in red - which has since been removed. As can be seen, the creek is very narrow at this point. The new location also provides plenty of parking and easy access.

The new pontoon lies just off an existing river wall previously used for end-on mooring, and Walcon was additionally tasked with creating an area where boats can lie alongside for drying out, immediately north of the pier. This uses greenheart piles spaced three metres apart (see diagram, right), and adds additional utility, allowing owners of yachts with a draft of up to two metres to undertake cleaning, antifouling and other works below the waterline at low tide.

As well as bringing more berth holders to the town who, it is hoped, will take advantage of local amenities to refresh themselves and replenish their boats, the facilities include a new public landing stage.



**DRYING-OUT BERTH PILES**

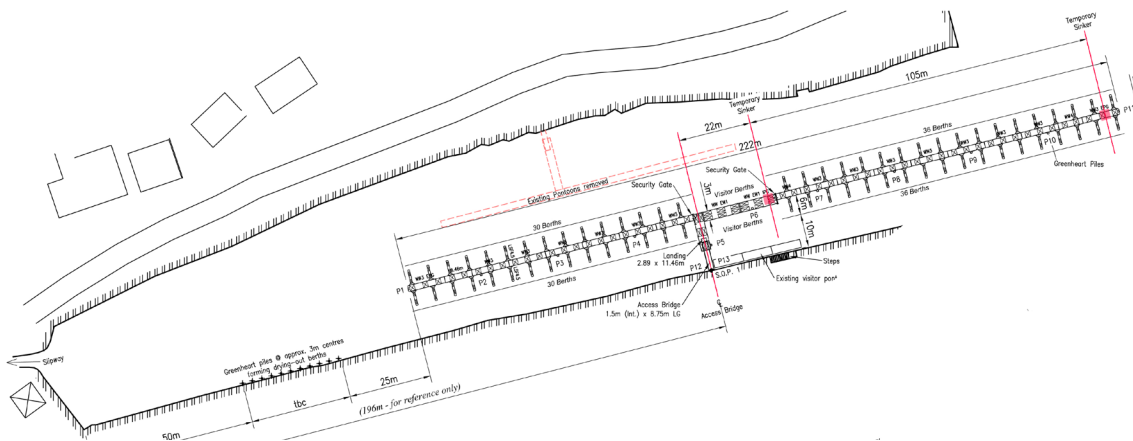


This is expected to encourage more visitors with larger boats to head ashore to explore Kingsbridge itself. The public ferry *River Maid*, which links Kingsbridge and Salcombe in the summer months, will also make the pontoons its new home.

As well as building and installing the finger berths, a 222 metre walkway and an access bridge, Walcon also undertook all the piling. Here the client, South Hams District Council, again specified the use of

sustainably sourced greenheart piles, which are both aesthetically pleasing and highly resilient to attack by marine fauna.

Despite some poor weather during the installation phase and what was described as 'the wrong kind of mud', which posed some unexpected challenges, the new facility opened in good time for Easter and the summer ahead.



- Ω -

Founded in 1963, Walcon Marine is the market leader in the design, construction and installation of marinas, yacht harbours and berthing facilities around the world. As probably the longest established and most experienced company in its field, Walcon Marine is a global organisation with manufacturing facilities in the UK, Australia and Dubai. Its pontoons are now installed in over 30 different countries on five continents, and recent projects include the marina built at Portland on the south coast of England for the 2012 Olympics.